



# RULES TO TAKE OUT THE GARBAGE

## LET'S RESPECT THE TIME TO TAKE OUT THE GARBAGE

Take out the garbage on the collection day until **8:30 AM** at the designated place.

If you take out the trash the night before or after the truck has picked it up, cats or crows can break the bags and bother neighbors. The garbage truck does not pass at an exact time so please take precautions.



## LET'S SEPARATE THE GARBAGE CORRECTLY

If you properly separate the garbage, it can become a resource !

Recently, **a large amount of paper has been mixed with burnable garbage**, causing it to go to waste instead of being recycled. We will appreciate your cooperation.



## THROW THE GARBAGE IN THE DESIGNATED PLACE

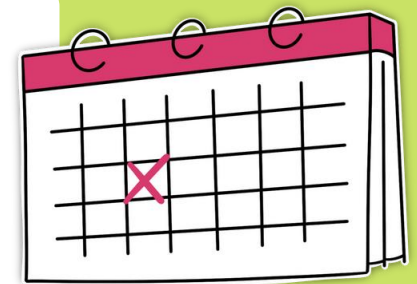
Drop it off at the designated point according to your area !

Please follow the rules. If you don't know where the collection point is, ask the neighborhood association or your neighbors.



## PLEASE FOLLOW THE COLLECTION SCHEDULE

Collection dates vary depending on the area where you live and the type of garbage.



## ABOUT COMBUSTIBLE GARBAGE

Please use clear plastic bags that you can see inside.

